



MONTHLY MEMBERSHIP PROGRESS REPORT

District 32 A

Results as of: 3/31/2016

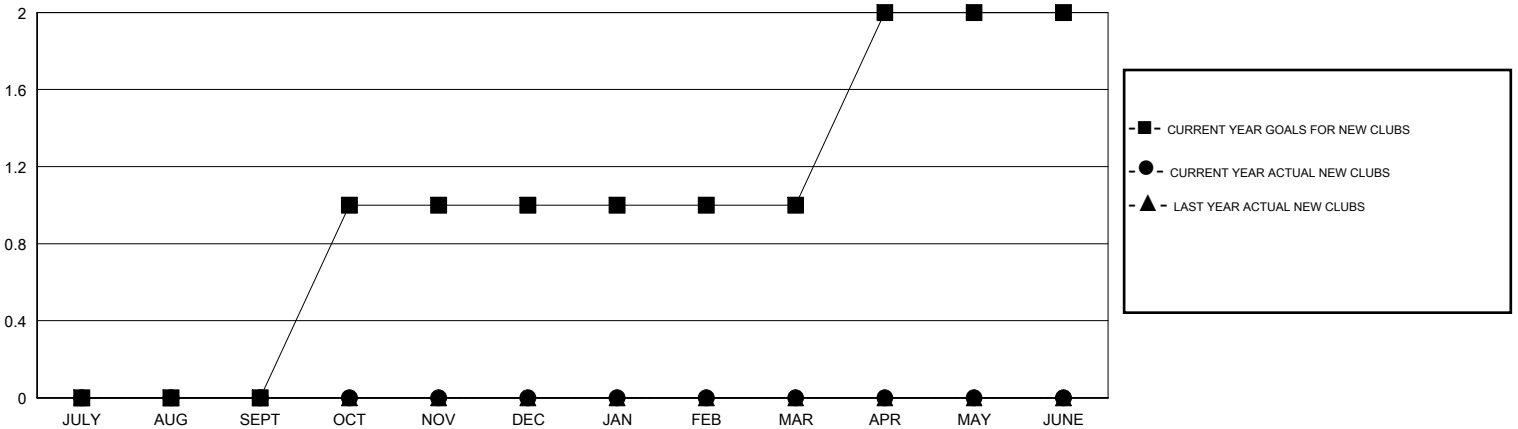
GMT: HARVEY WHITLEY

LOCATION SOUTH CAROLINA

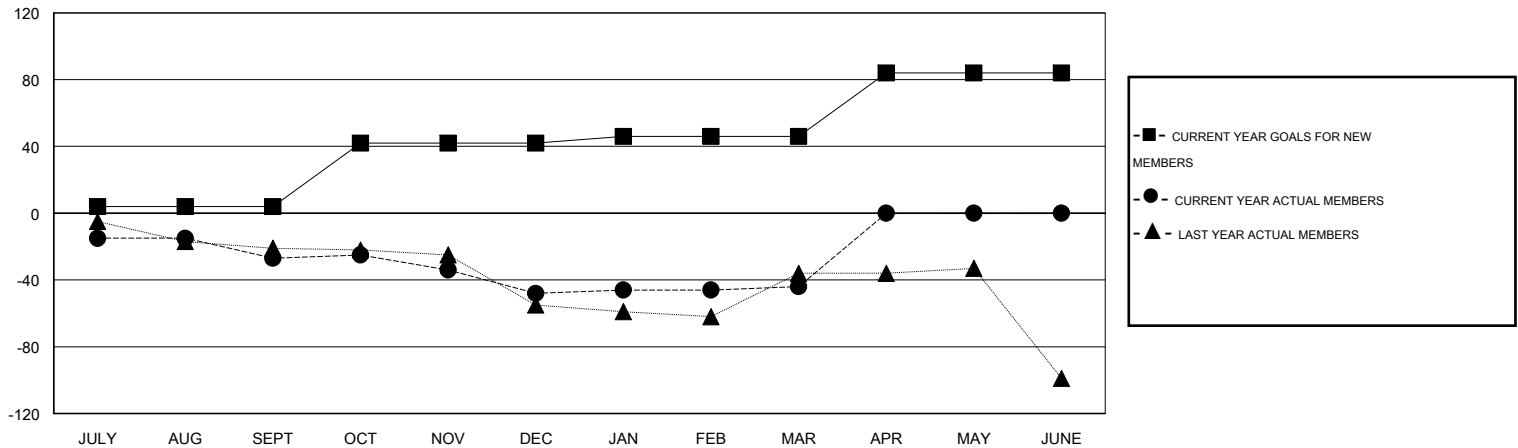
GMT CA 1

Clubs					Members				
RESULTS FOR 2015-2016					RESULTS FOR 2015-2016				
QUARTER	NEW CLUB GOAL	NEW CLUBS	DROPPED CLUBS	NET GAIN/LOSS	QUARTER	NEW MEMBER GOAL	CHARTER AND NEW MEMBERS ADDED	DROPPED MEMBERS	NET GAIN/LOSS
JULY/AUG/SEPT	0	0	0	0	JULY/AUG/SEPT	4	14	41	-27
OCT/NOV/DEC	1	0	0	0	OCT/NOV/DEC	38	12	33	-21
JAN/FEB/MAR	0	0	0	0	JAN/FEB/MAR	4	26	22	4
APR/MAY/JUNE	1	0	0	0	APR/MAY/JUNE	38	0	0	0

GOALS AND ACTUAL NEW CLUBS CUMULATIVE



GOALS AND ACTUAL MEMBERS CUMULATIVE



DROPPED CLUBS: 0	17 CLUBS OF 34 ADDED 1 OR MORE NEW MEMBERS	GENDER DISTRIBUTION
		MALE 679 (71.10%)
		FEMALE 276 (28.90%)
DROPPED MEMBERS	CLICK HERE FOR HEALTH ASSESSMENT DATA	FAMILY UNIT MEMBERS 223
DECEASED 8		HEAD OF HOUSEHOLD 109
CLUB CANCELLED 0		NON-HEAD OF HOUSEHOLD 114
OTHER 88		
TOTAL 96		